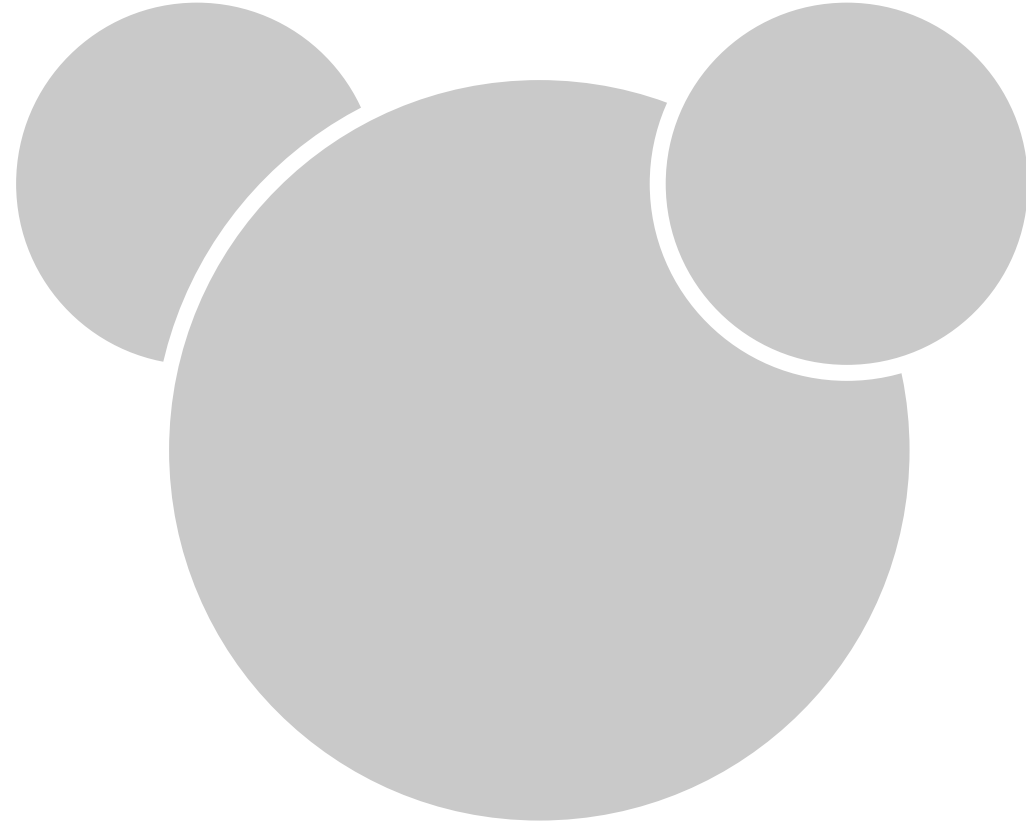
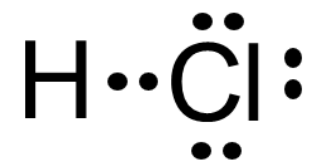
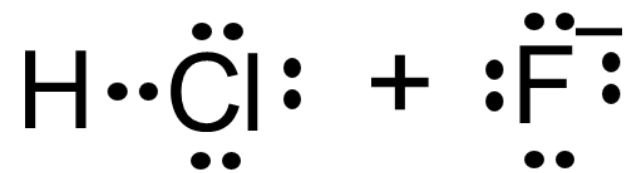


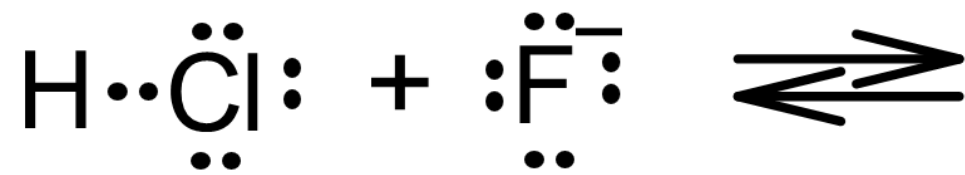
Н · · ċ ġ

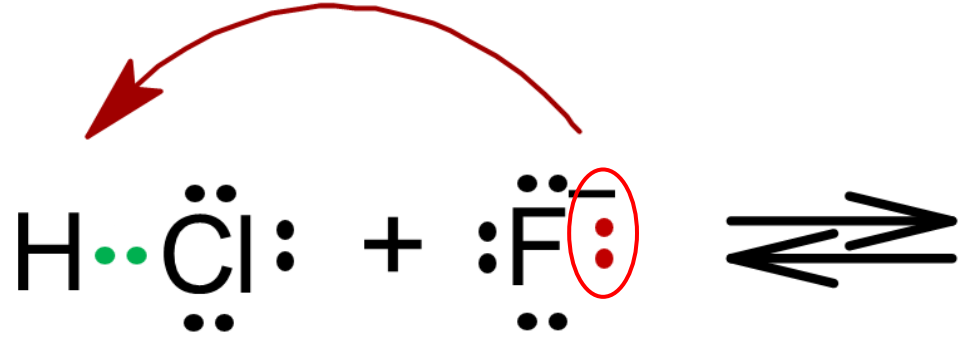


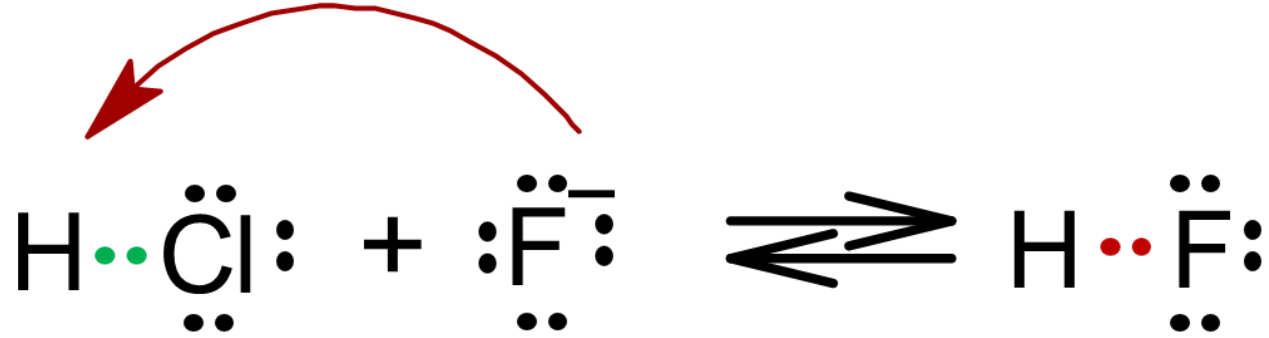


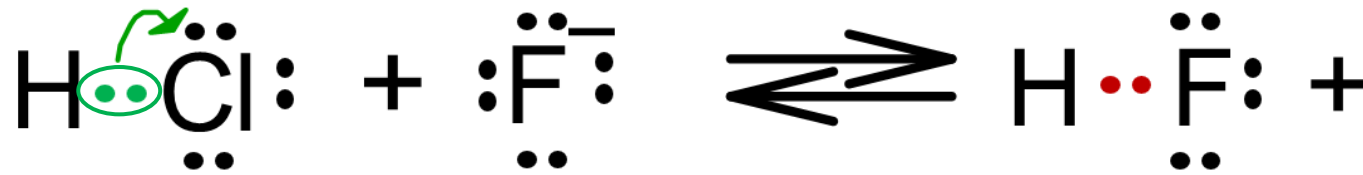






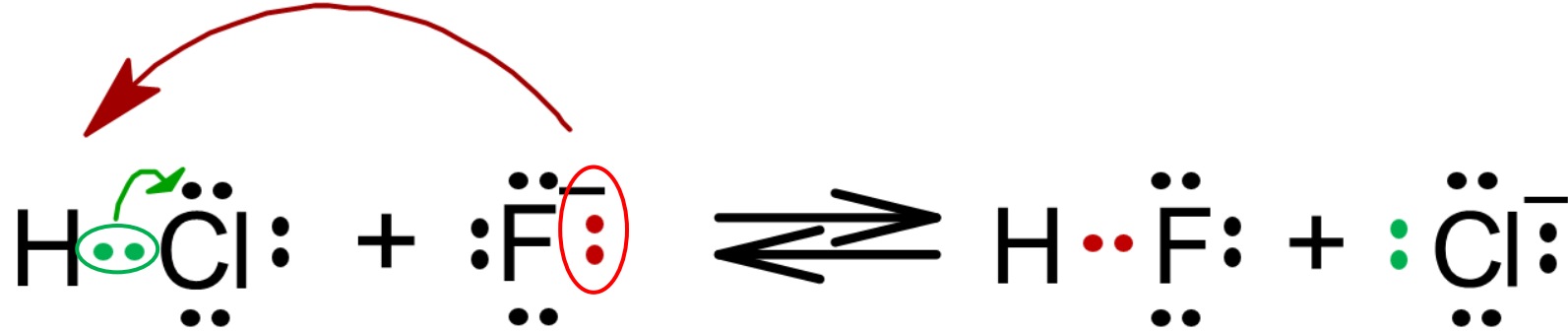


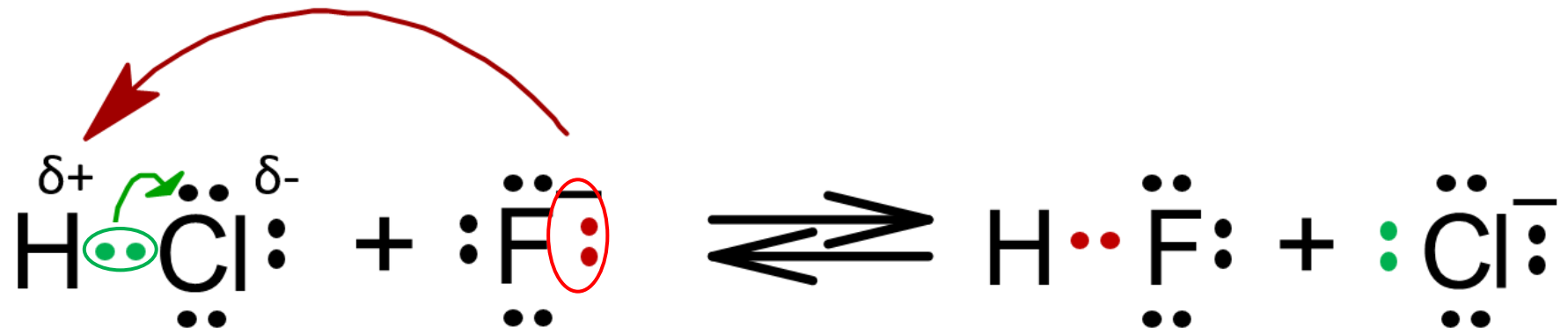


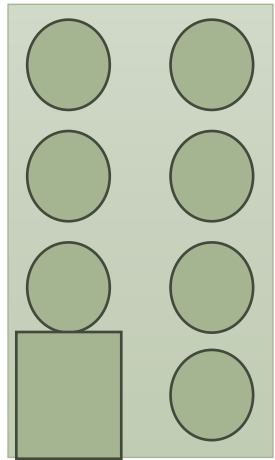




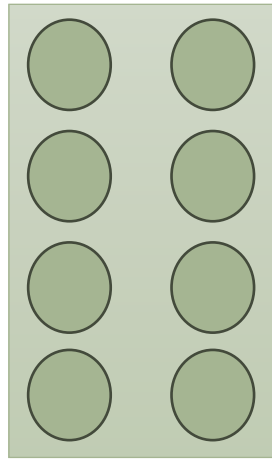




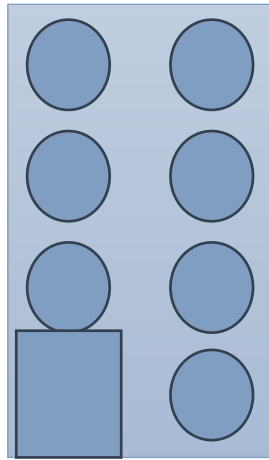




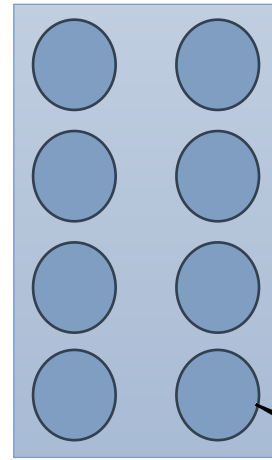
Chlor-
Atom Cl



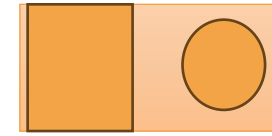
Chlorid-
Ion Cl⁻



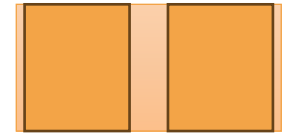
Fluor-
Atom F



Fluorid-
Ion F⁻

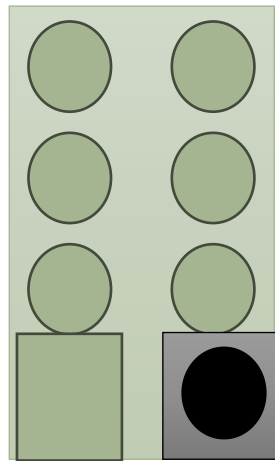


Wassers-
stoff-
Atom

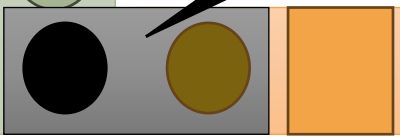


Wassers-
stoff-Ion
H⁺

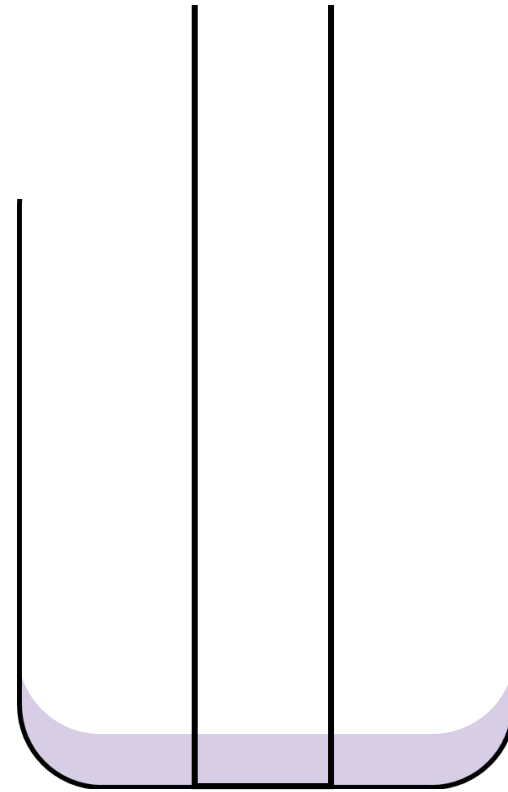
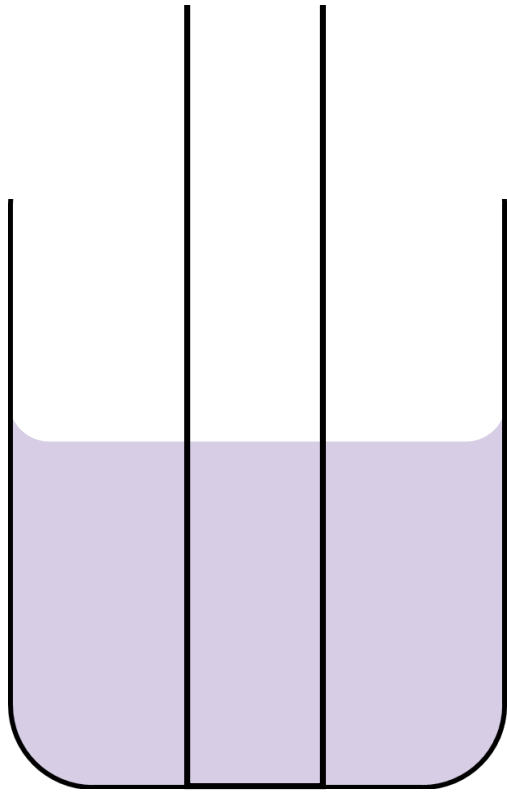
Außenelektron

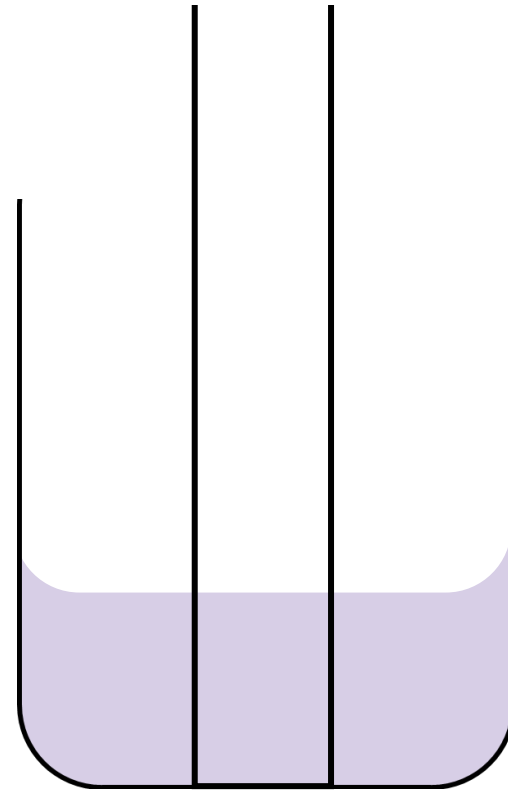
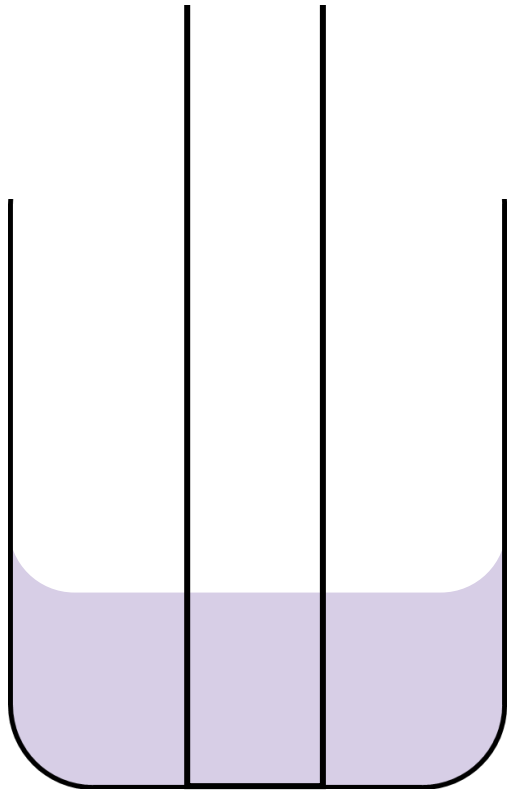


Bindungs-
Elektronen

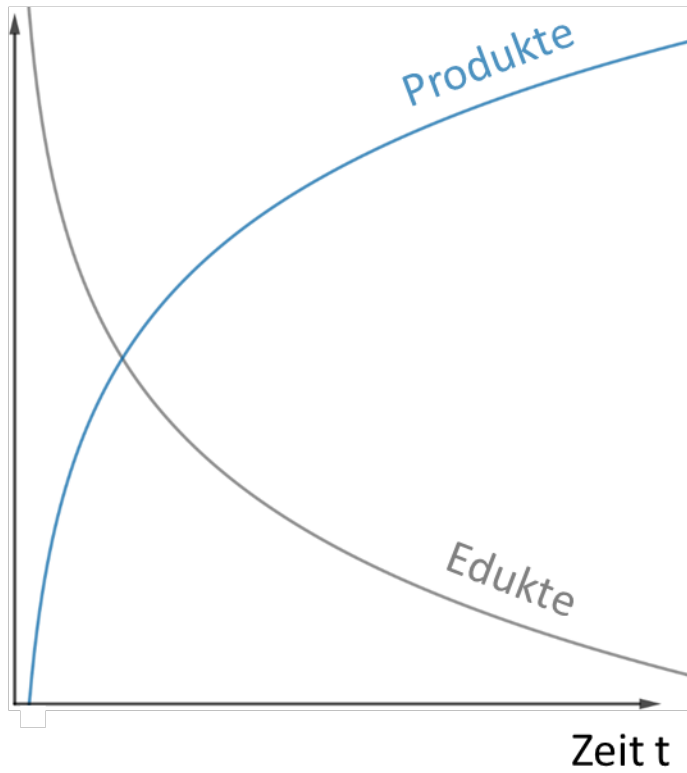


Chlorwasserstoff-
Moleküle HCl

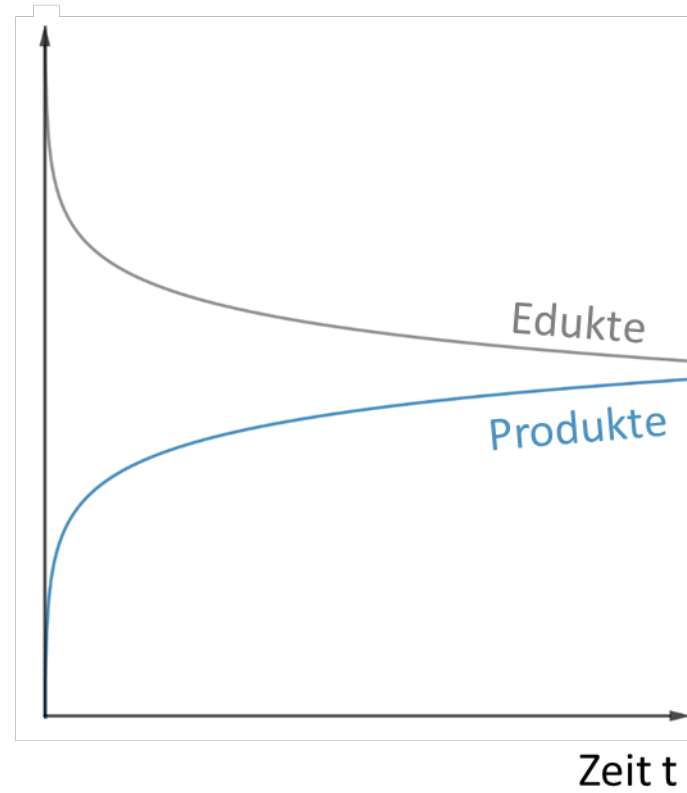




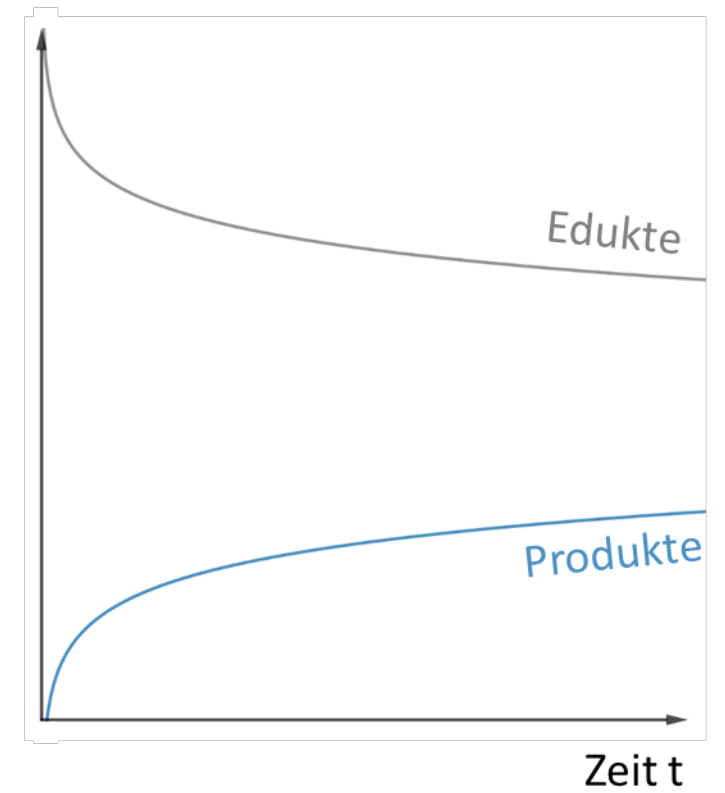
Konzentration c



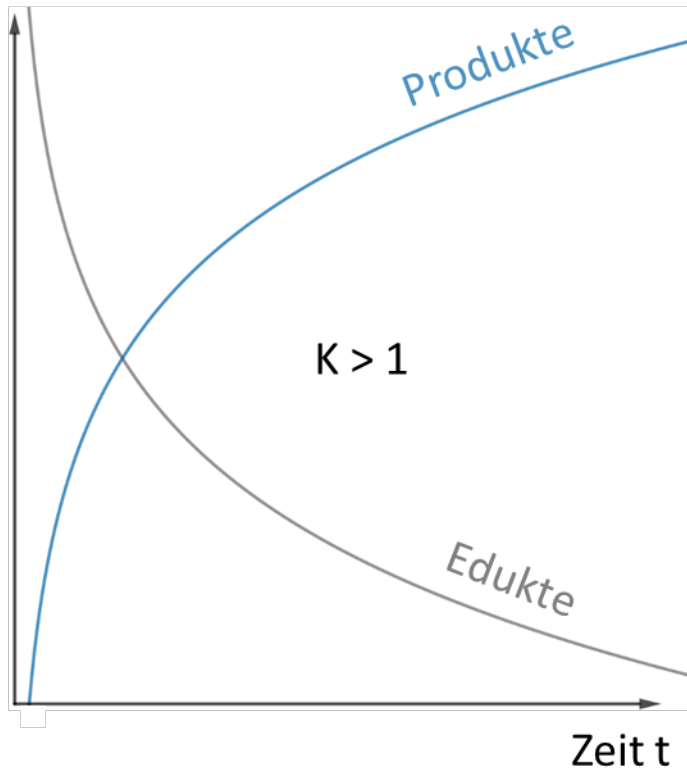
Konzentration c



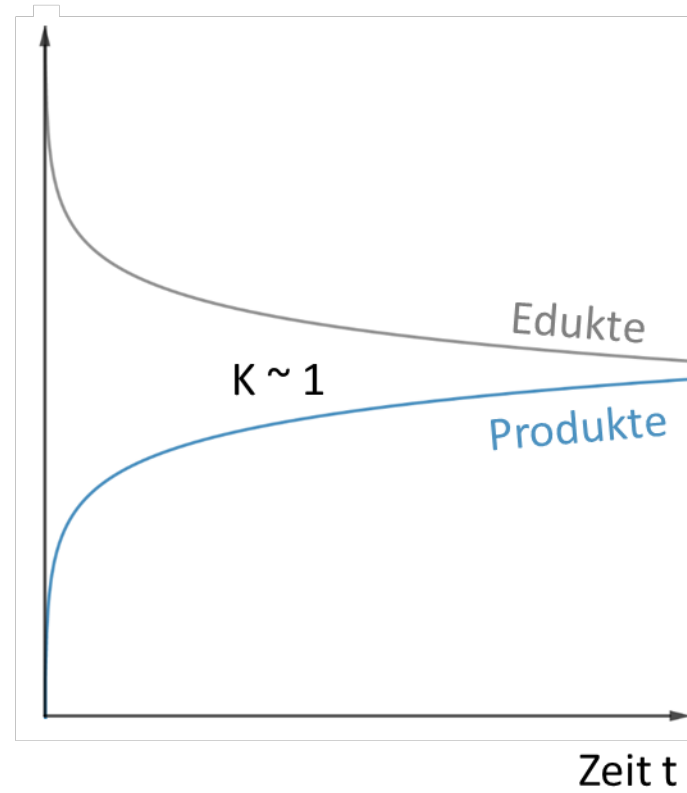
Konzentration c



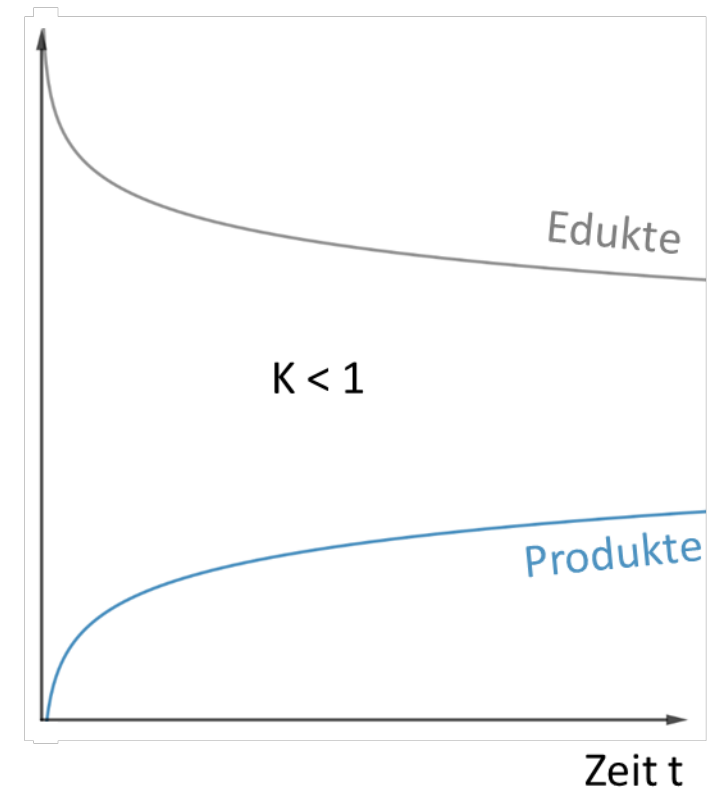
Konzentration c



Konzentration c

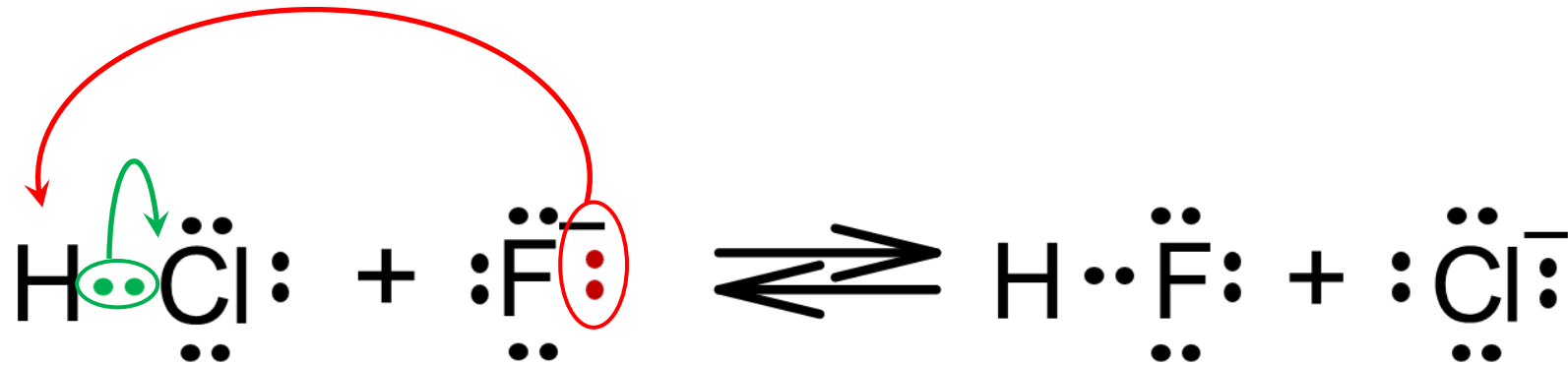


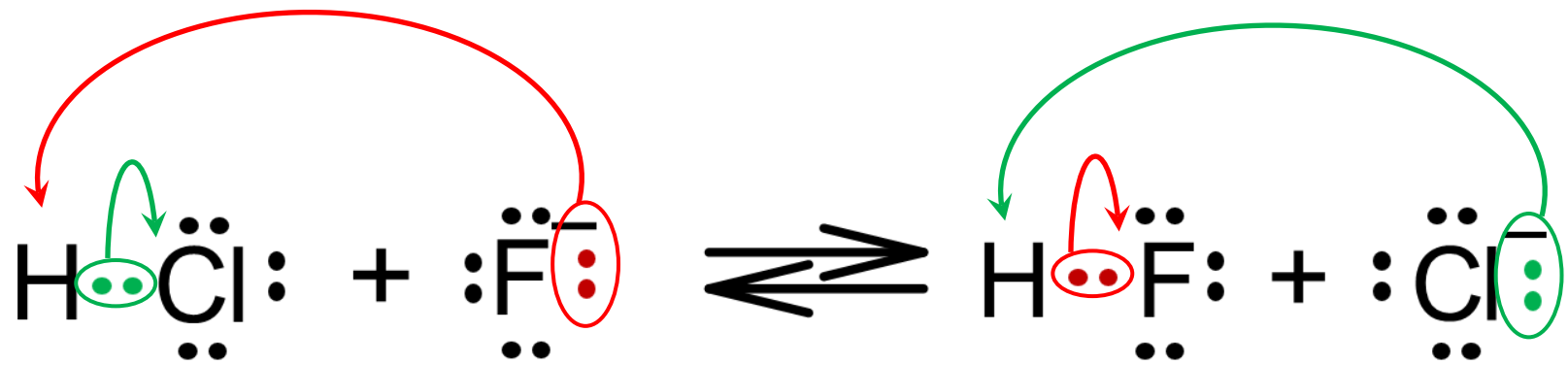
Konzentration c

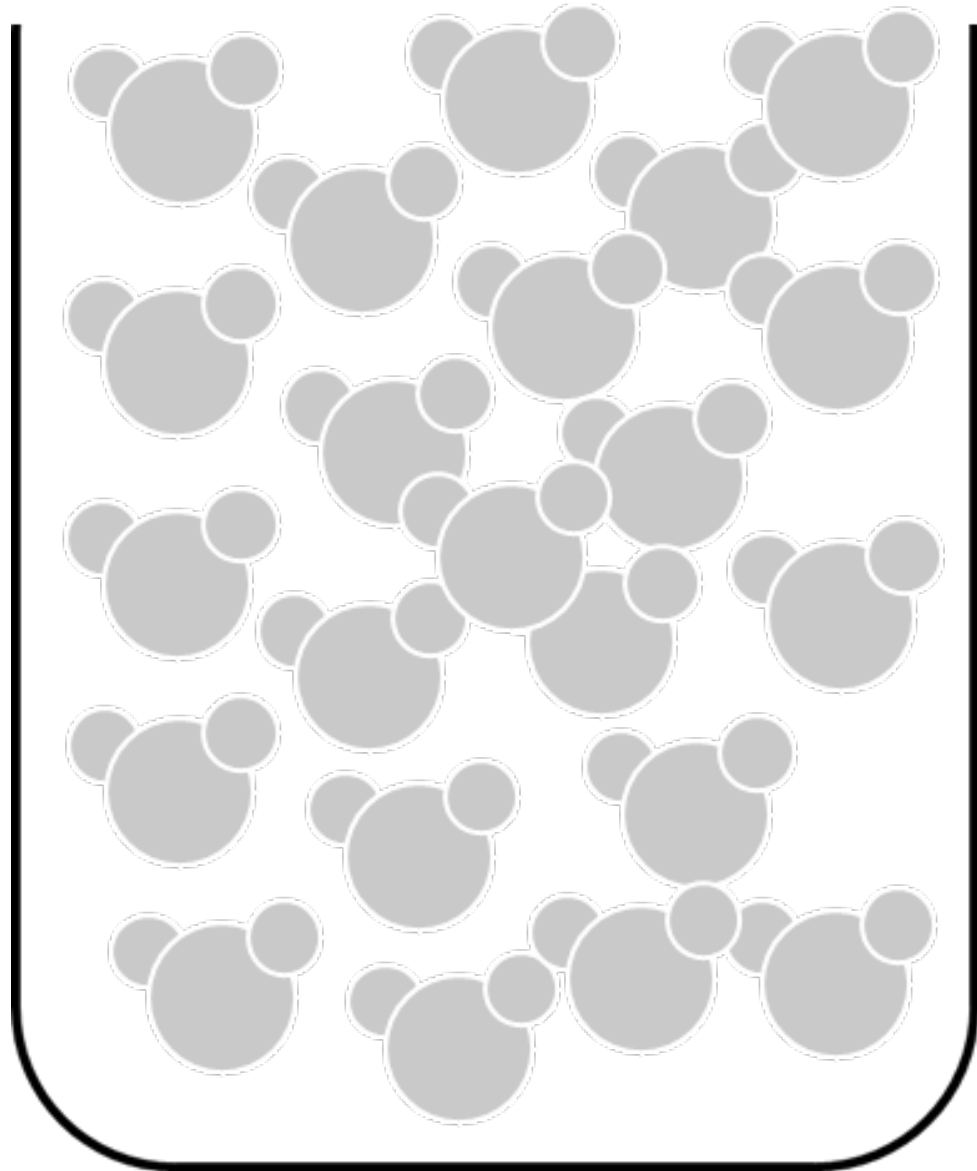












Name des Teilchens

Strukturformel



Name des Teilchens

Strukturformel



Name des Teilchens

Strukturformel



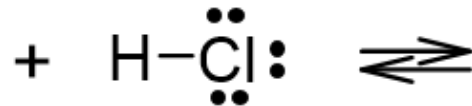
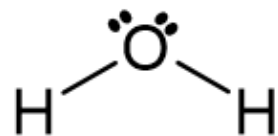
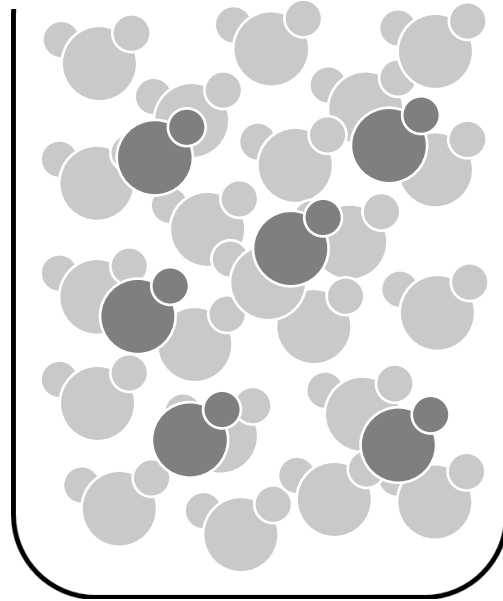
Wasser- Molekül	
Chlorwasserstoff- Molekül	
Oxonium- Ion	
Chlorid- Ion	
Cyanwasserstoff- Molekül	
Cyanid- Ion	
Hydroxid- Ion	
Hydrogensulfid- Ion	

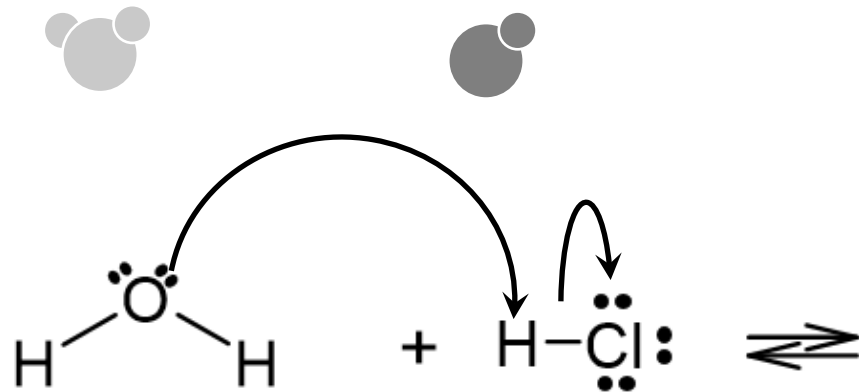
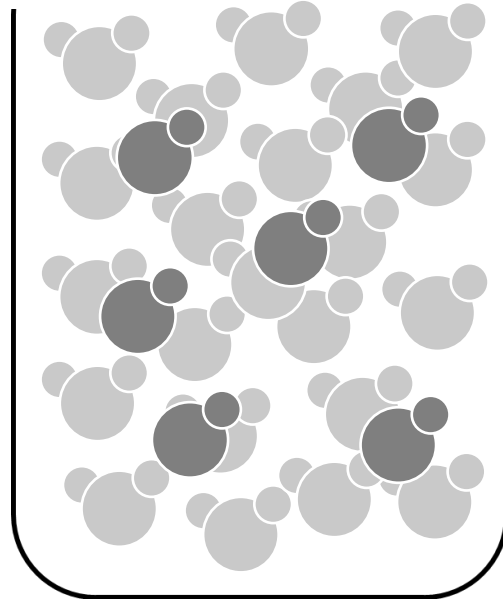


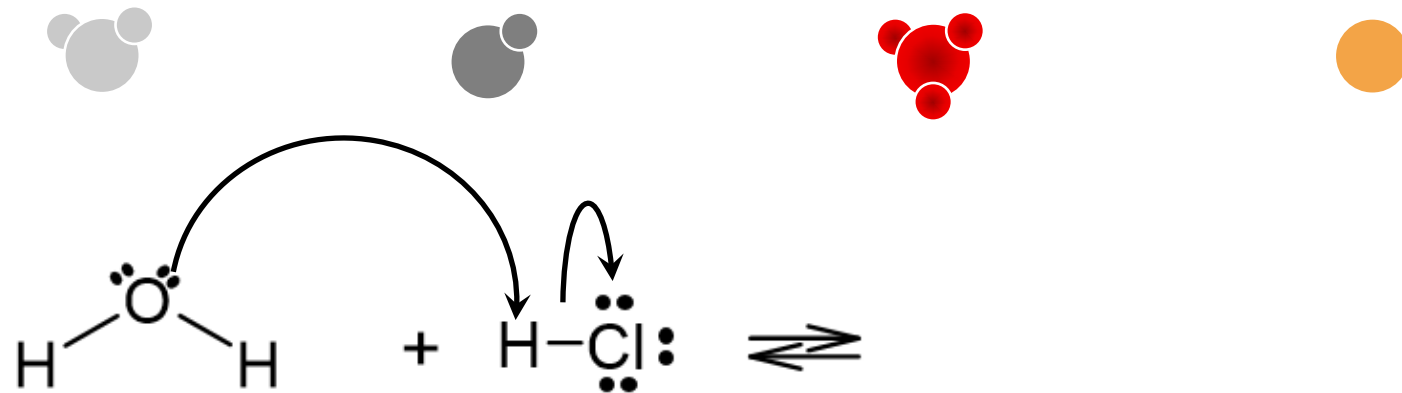
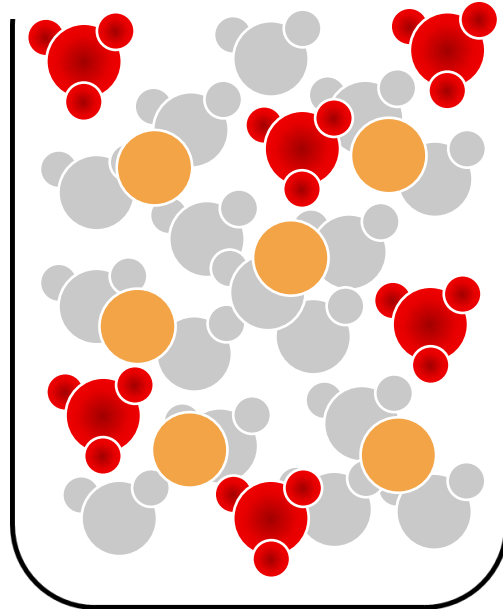
Name des Teilchens

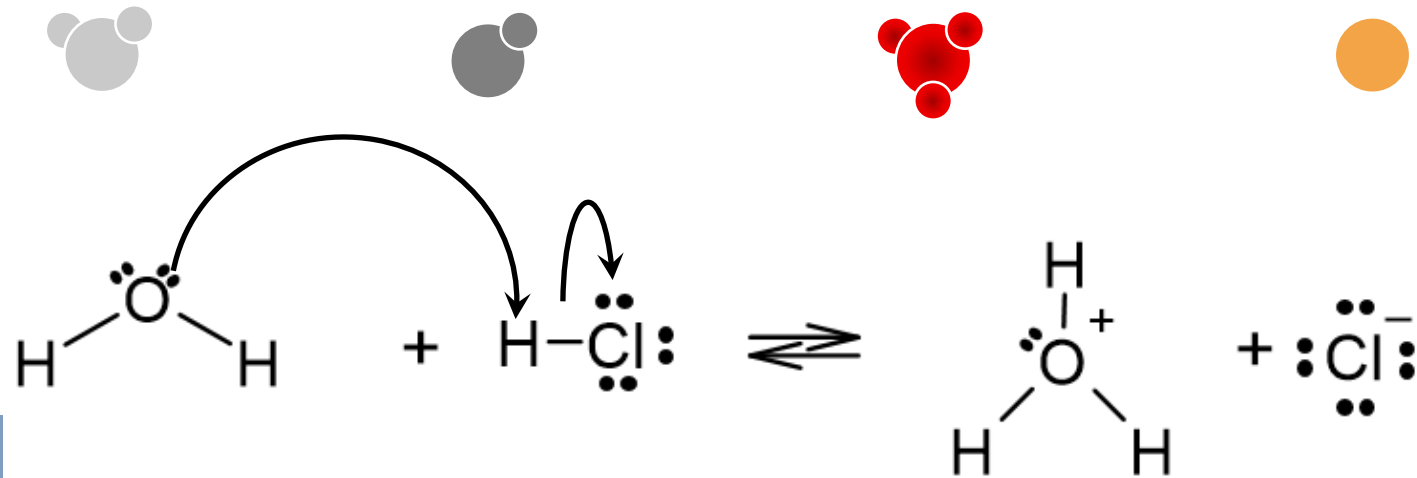
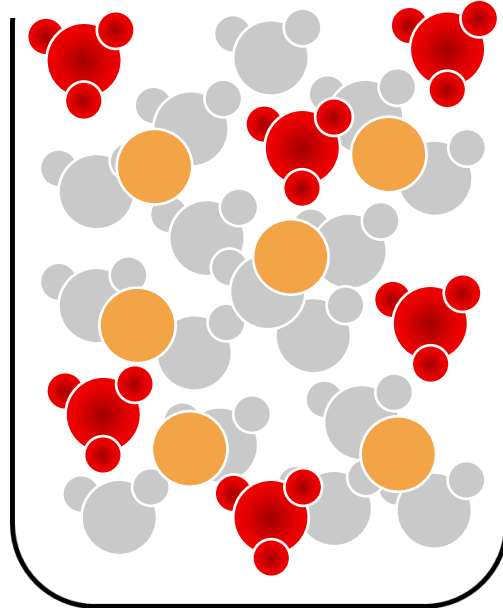
Strukturformel

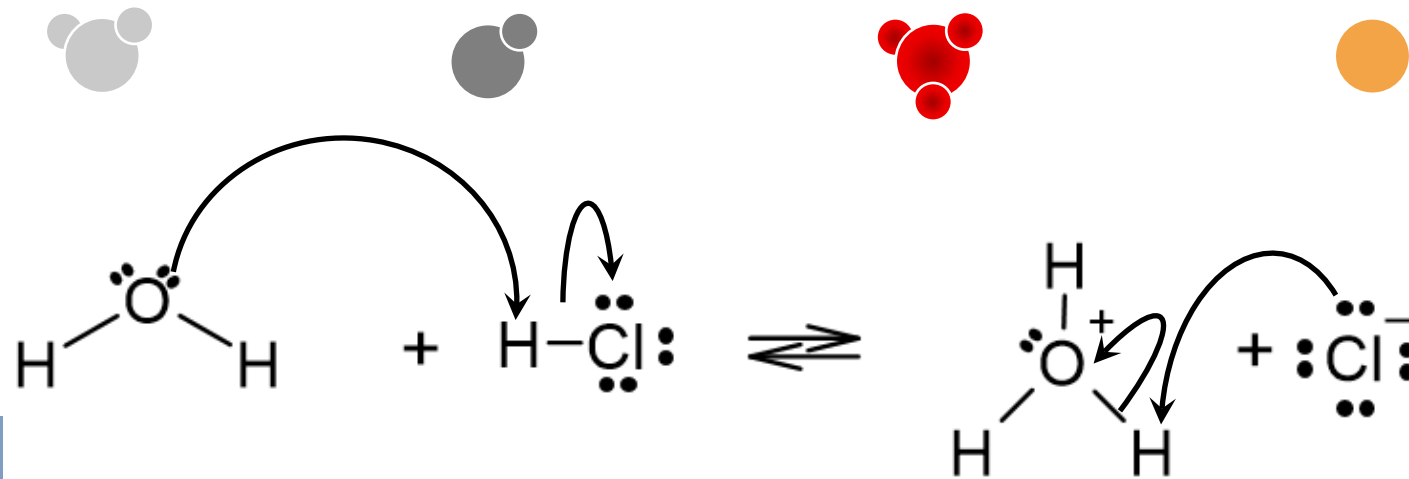
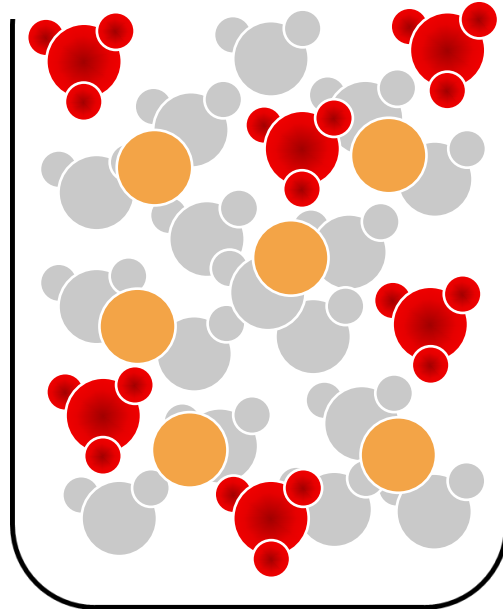
Schwefelwasserstoff- Molekül	
Iodid- Ion	
Iodwasserstoff- Molekül	
Bromwasserstoff- Molekül	
Bromid- Ion	

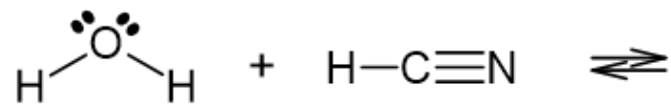
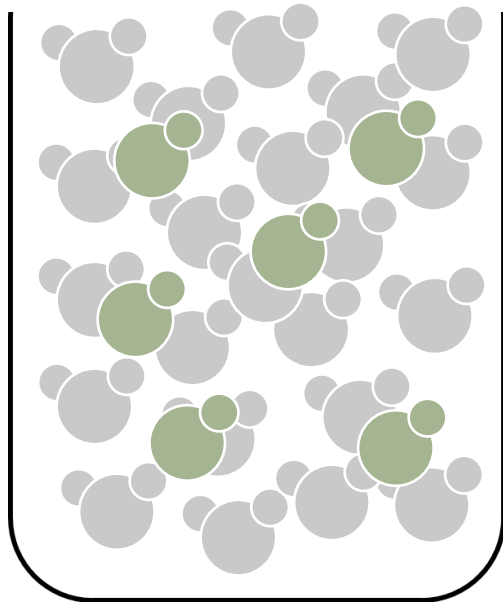


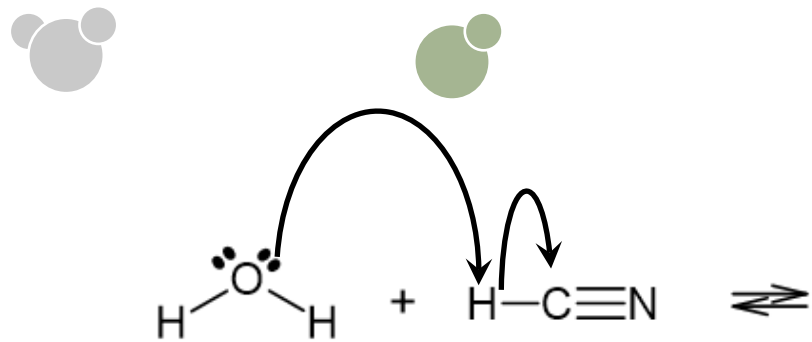
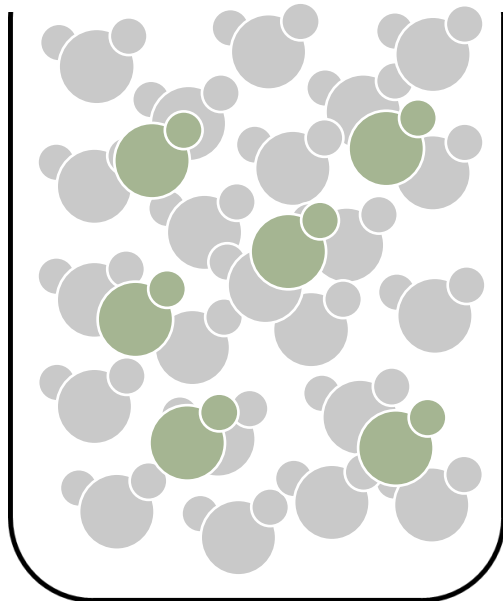


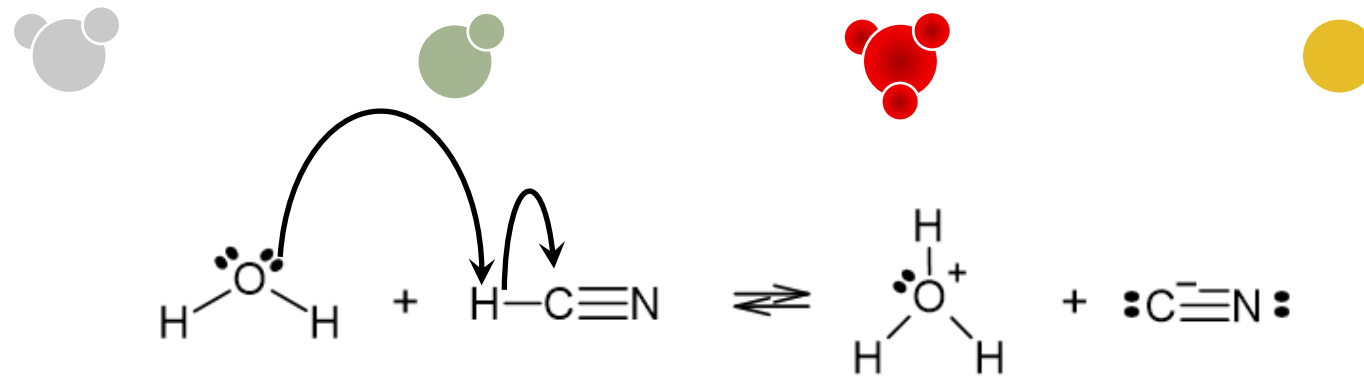
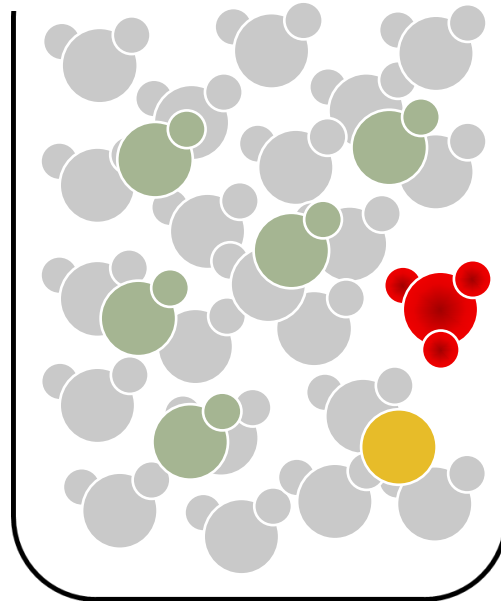


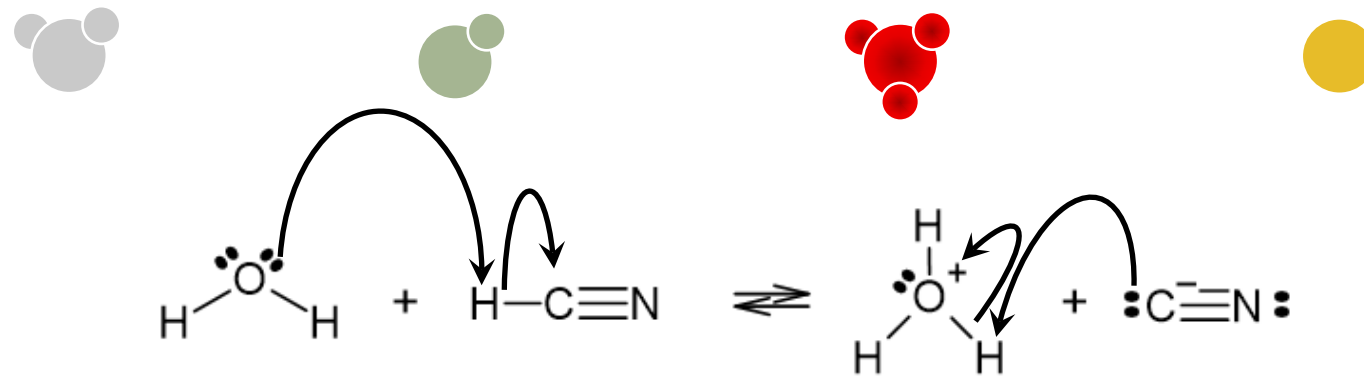
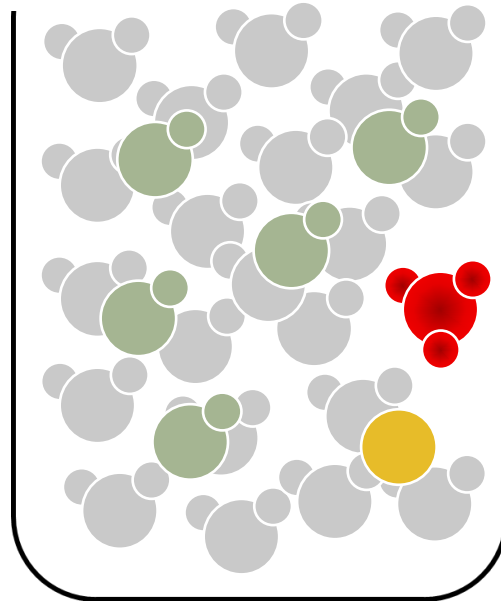


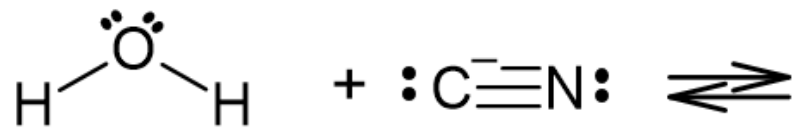
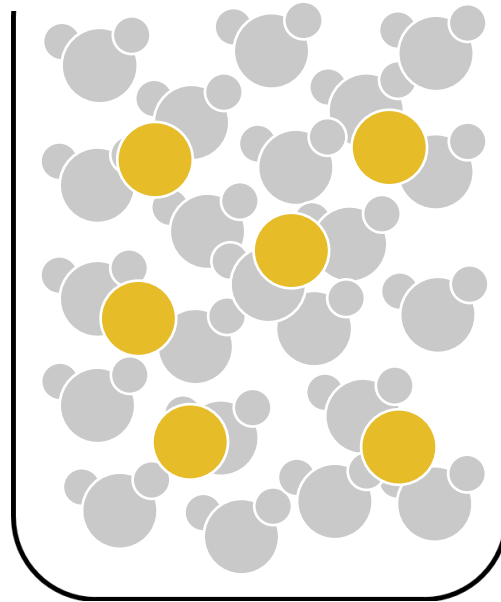


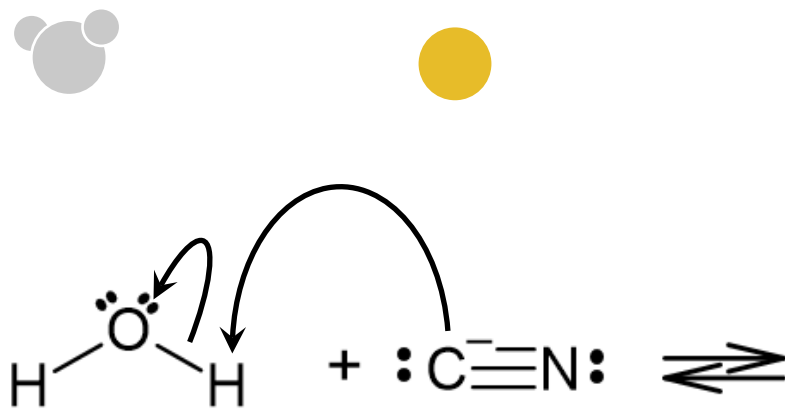
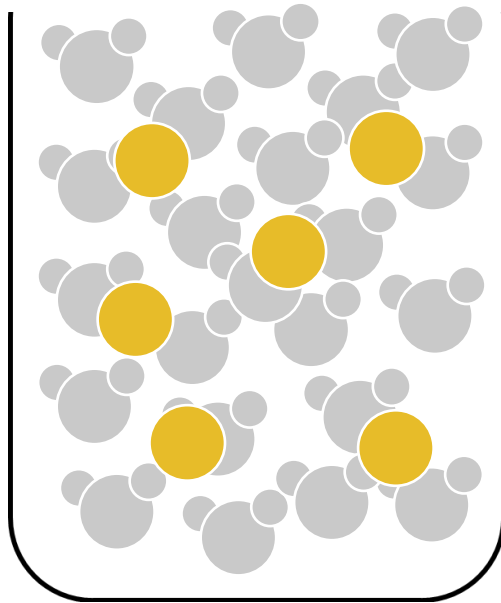


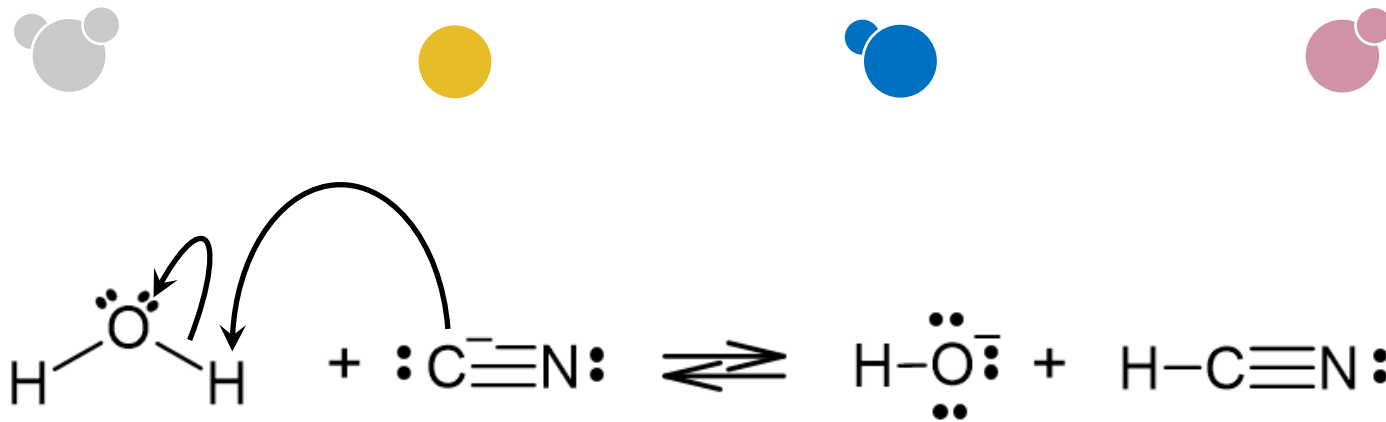
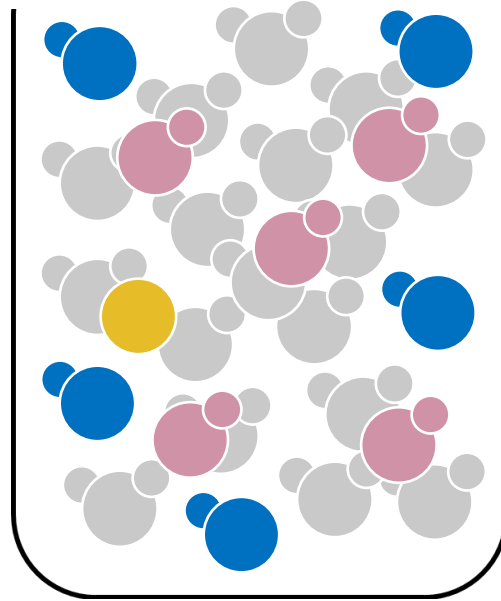


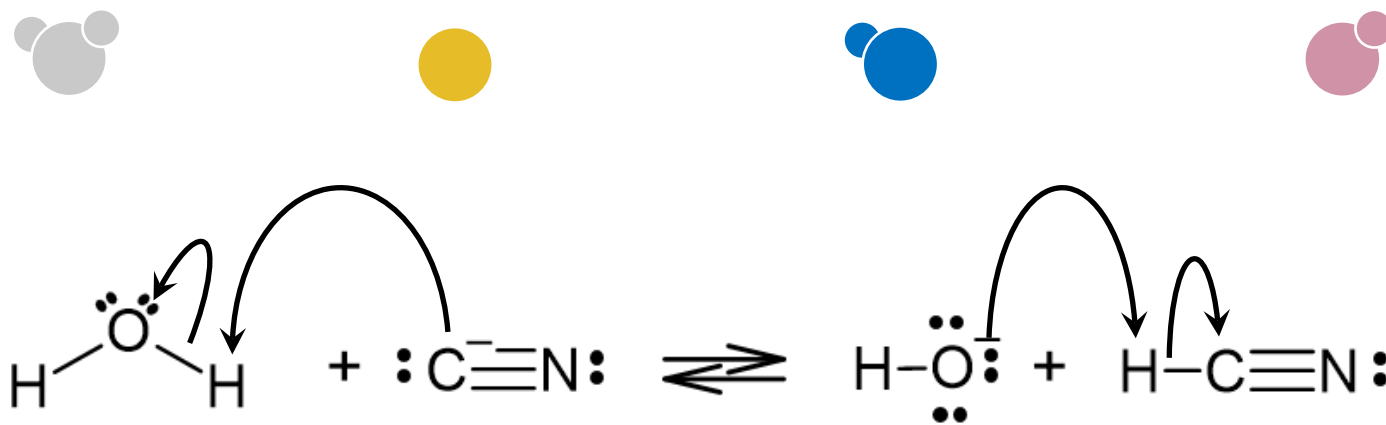
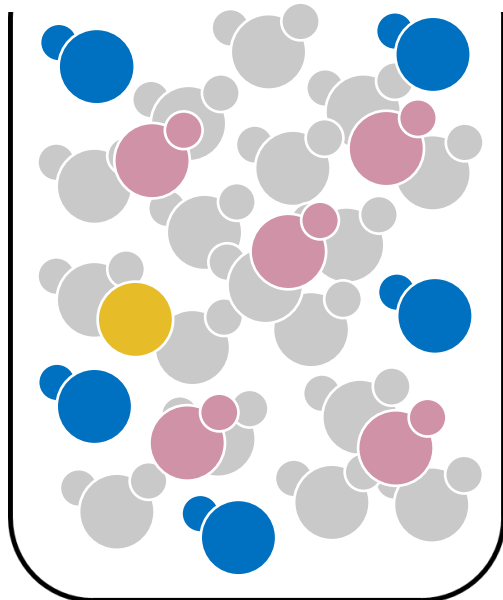


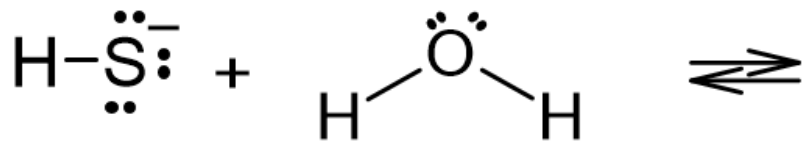
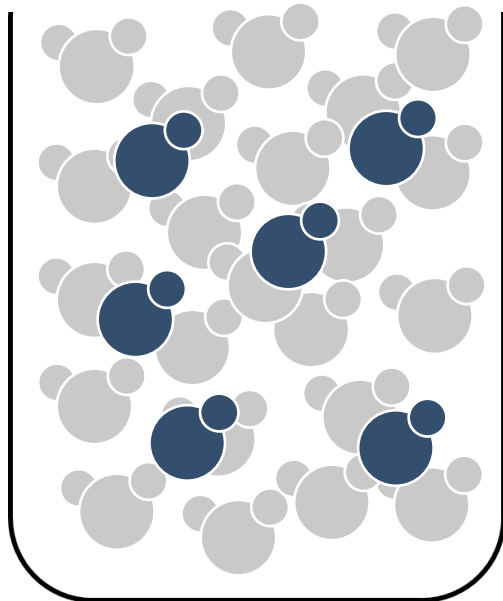


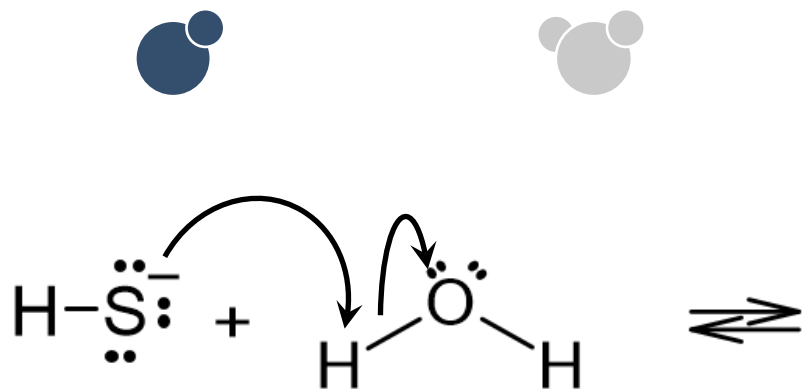
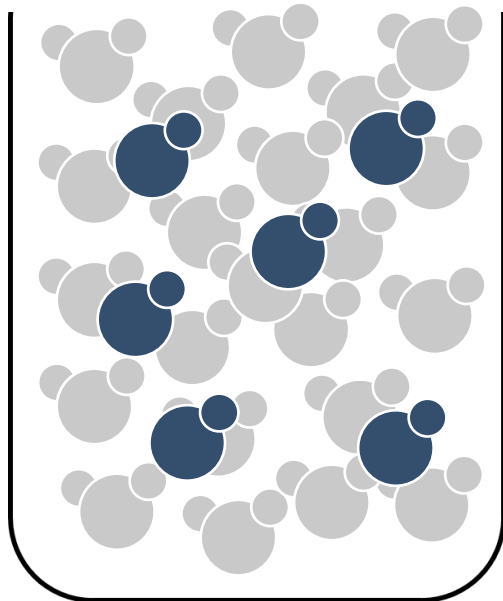


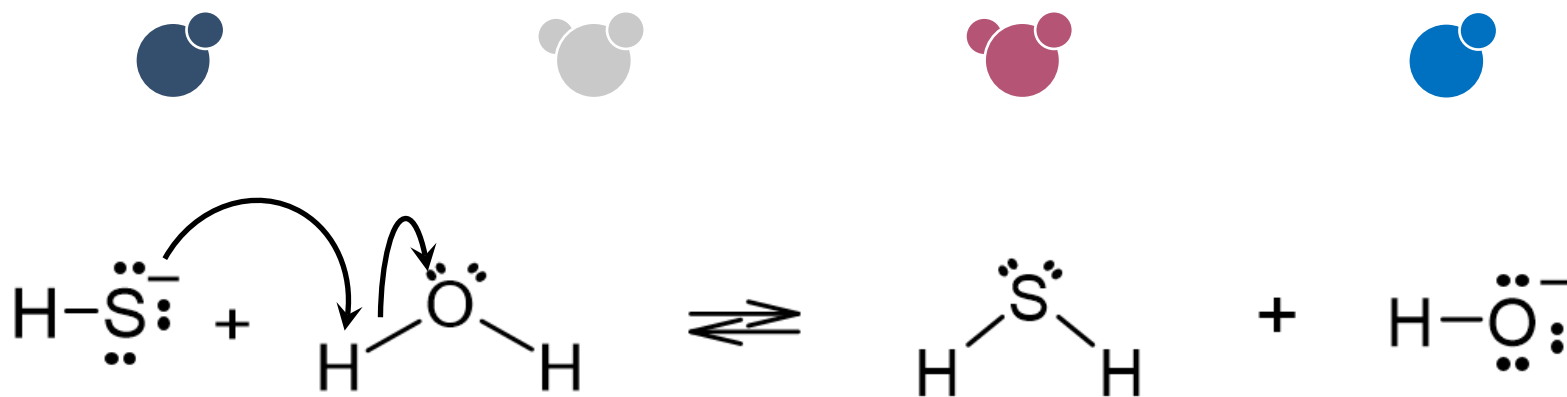
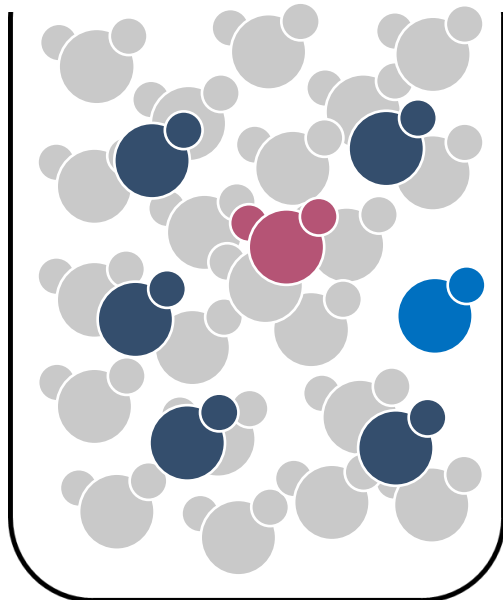


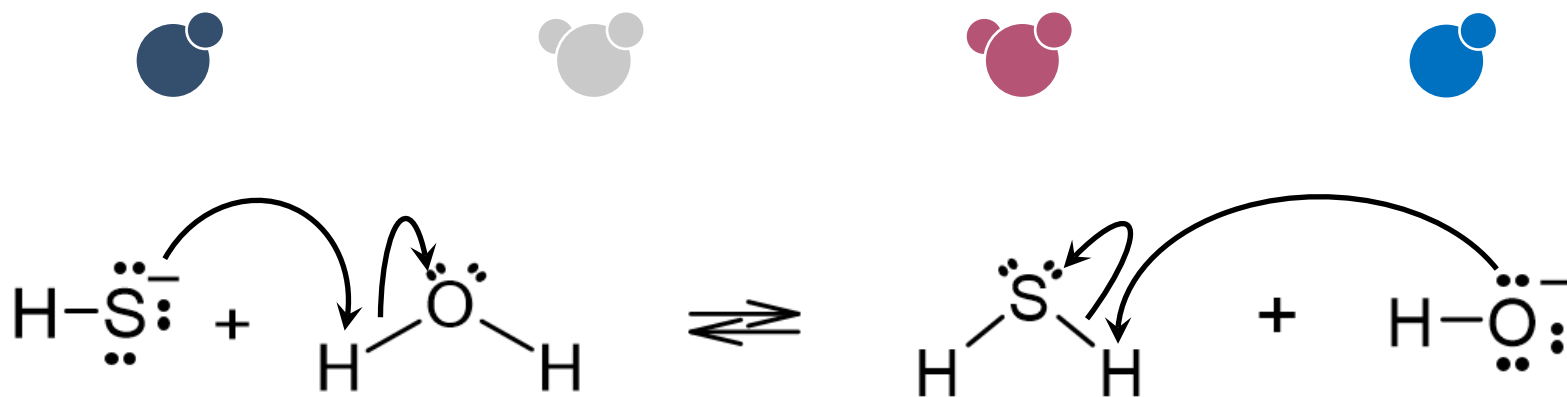
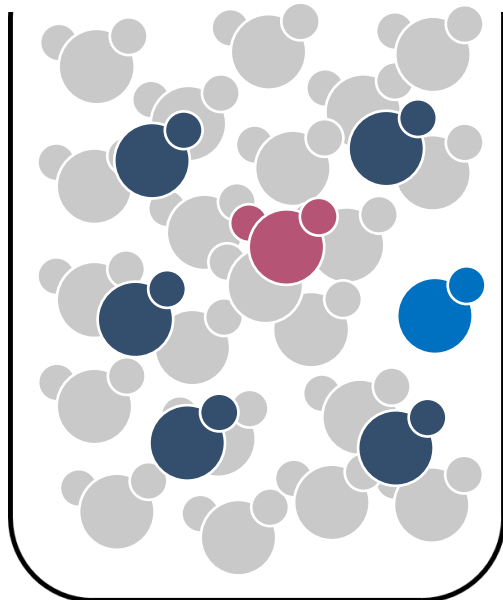




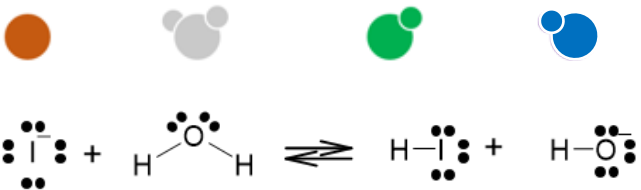
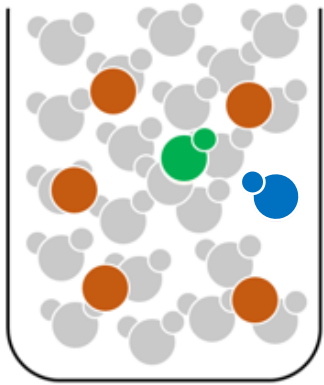




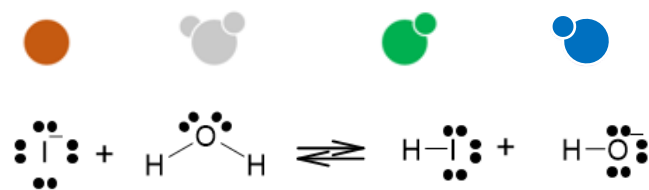
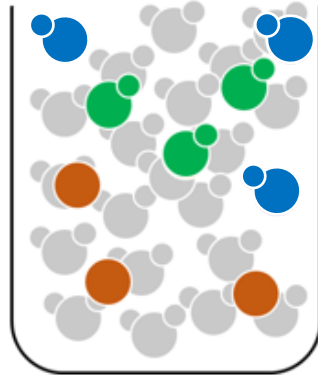




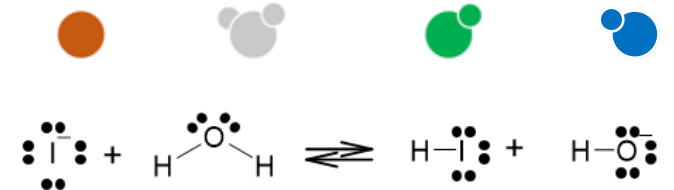
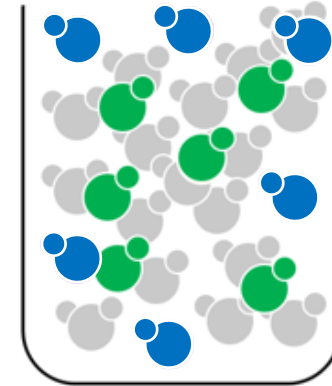
1



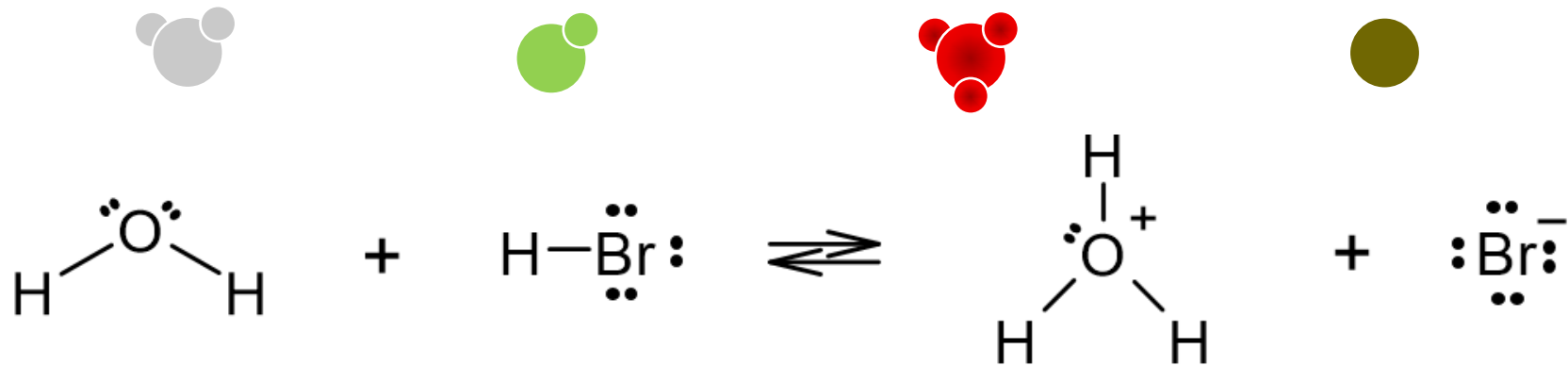
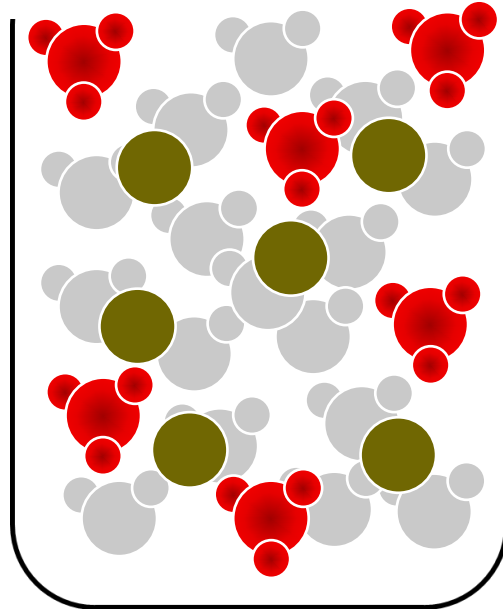
2

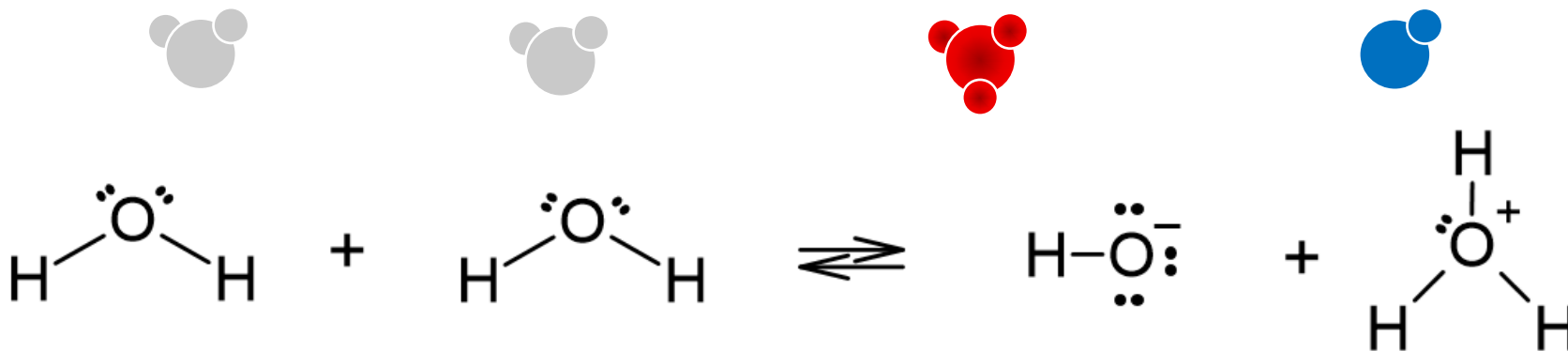
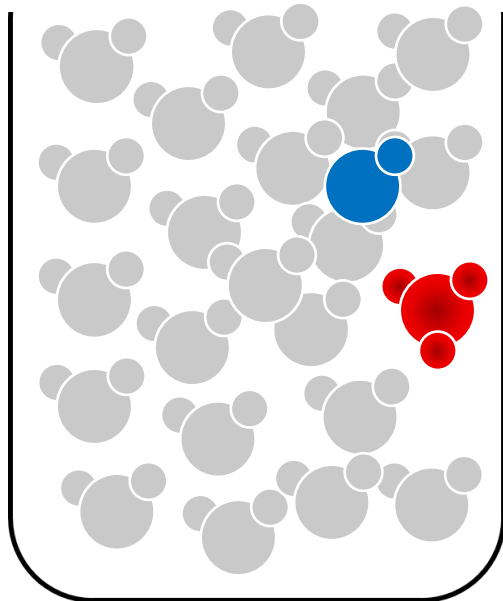


3



Das **Iodid-Ion I⁻** ist eine **schwache Base**. Welche dieser Abbildungen entspricht am ehesten der Reaktion von Iodid-Ionen mit Wasser-Molekülen, wenn sich ein Gleichgewicht eingestellt hat? Warum?





Säurestärke	Formel	Name der Säure (Teilchen)	pK _A	Formel	Name der Base (Teilchen)	pK _B	Basenstärke
sehr stark	HI	Iodwasserstoff-Molekül	-10	I ⁻	Iodid-Ion	24	sehr schwach
	HBr	Bromwasserstoff-Molekül	-8,9	Br ⁻	Bromid-Ion	22,9	
	HCl	Chlorwasserstoff-Molekül	-6	Cl ⁻	Chlorid-Ion	20	
	H ₂ SO ₄	Schwefelsäure-Molekül	-3	HSO ₄ ⁻	Hydrosulfat-Ion	17	
stark	H ₃ O ⁺	Oxonium-Ion	0	H ₂ O	Wasser-Molekül	14	schwach
	HSO ₄ ⁻	Hydrosulfat-Ion	1,92	SO ₄ ²⁻	Sulfat-Ion	12,08	
	HF	Fluorwasserstoff-Molekül	3,14	F ⁻	Fluorid-Ion	10,86	
mittelstark	H ₂ CO ₃	Kohlensäure-Molekül	6,52	HCO ₃ ⁻	Hydrogencarbonat-Ion	7,48	mittelstark
	H ₂ S	Schwefelwasserstoff-Molekül	7,04	HS ⁻	Hydrosulfid-Ion	7,08	
	H ₂ PO ₄ ⁻	Dihydrogenphosphat-Ion	7,21	HPO ₄ ²⁻	Hydrogenphosphat-Ion	6,80	
schwach	NH ₄ ⁺	Ammonium-Ion	9,25	NH ₃	Ammoniak-Molekül	4,75	stark
	HCN	Cyanwasserstoff-Molekül	9,4	CN ⁻	Cyanid-Ion	4,6	
	HCO ₃ ⁻	Hydrogencarbonat-Ion	10,40	CO ₃ ²⁻	Carbonat-Ion	3,60	
	HS ⁻	Hydrosulfid-Ion	11,96	S ²⁻	Sulfid-Ion	1	
	H ₂ O	Wasser-Molekül	14	OH ⁻	Hydroxid-Ion	0	
sehr schwach	NH ₃	Ammoniak-Molekül	23	NH ₂ ⁻	Amid-Ion	-9	sehr stark

